

掌握阻尼核芯!
Master damping core

www.hfzy.pro



关注了解更多

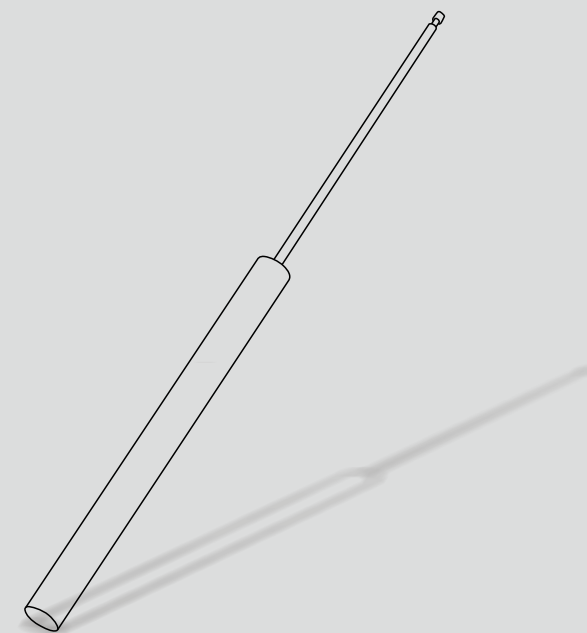
地址: 广东省高要区金利镇金盛工业区
Add: Guangdong Gaoyao Jinli Town Jinsheng Industrial Park District
Tel: 0758-8593068
Fax: 0758-8593844
E-mail: hongfengyeya@ hotmail.com
Http://china-hongfeng.alibaba.com

本目录所提供的数据仅供参考，以产品为准，如有改动，恕不另行通知，最终解释权属本公司所有。

All figures on this for reference only and subjected to actual products, we will not keep you informed for any change, which will be explain by our company.



智领阻尼核芯
INTELLECTUAL DAMPING CORE



弘 丰 液 压 五 金
H • FENG HYDRAULIC HARDWARE



掌握阻尼核芯!
Master damping core

公司简介 Company profile

弘丰液压五金制品厂是一家集科研、开发、设计、生产高品质的铰链阻尼器,滑轨阻尼器,多功能缓冲器,移门缓冲器,智能缓冲系统为一体的高新企业。拥有国际先进水平高精度的自动化专用设备及生产线,以领先的技术,现代化的规范管理为基础,产品符合国家GB/T19001-2016技术标准,已通过ISO9001:2015国际质量管理体系认证。

企业凭借良好的企业信誉,精密技术和精湛严谨的制作工艺,优质的产品质量和扎实的服务,产品畅销国内及国际市场,荣获海内、外客户一致好评。我们通过提供最佳产品最高水平的专业知识和市场主导创新技术,逐渐成为引领及推动行业的发展标杆。以客户的需求为中心,始终坚持着专业、专注的品牌发展理念,我们致力于进取的姿态,诚实正直的经营理念。秉承严谨科学的工作态度不断为用户创造更大价值,我们愿与国内外顾客一起携手共进、掌握阻尼器核芯,智造功能五金系统。

Hongfeng Hydraulic Hardware Factory is a high-tech enterprise which integrates scientific research, development, design and production of high-quality hinge damper, slideway damper, multi-functional buffer, door-moving buffer and intelligent buffer system. With advanced international level and high precision automatic special equipment and production line, based on advanced technology and modern standardized management, the products conform to national GB/T19001-2016 technical standards, and have passed the certification of ISO 9001:2015 international quality management system.

With good corporate reputation, sophisticated technology and exquisite and rigorous production process, high quality product quality and solid service, our products sell well in domestic and international markets, and won unanimous praise from domestic and foreign customers. By providing the best product with the highest level of professional knowledge and market-led innovation technology, we gradually become the benchmark to lead and promote the development of the industry. Focusing on the needs of customers, we always adhere to the concept of professional and dedicated brand development. We are committed to an enterprising attitude, honest and upright business philosophy. Adhering to the rigorous and scientific working attitude, we will continue to create greater value for users. We are willing to work hand in hand with customers at home and abroad, master the core of damper, and intelligently build functional hardware systems.





- 弘丰智扬经过ISO9001质量标准认证，严格的品质管控，从原材料到成品包装全线流程采取ERP管理系统，弘丰智扬重创新重研发，公司的研发团队专注于液压技术的钻研，在同行领域中取得了技术突破，也获得了多项的专利。
- Hongfeng Zhiyang has passed ISO9001 quality standard certification, strict quality control, and adopts ERP management system for the whole process from raw materials to finished product packaging. Hongfeng Zhiyang focuses on innovation and research and development. Technological breakthroughs have been made, and a number of patents have also been obtained.

小配件•大学问

Gadgets • with excellent technology



弘丰智扬创业初心与未来期望

液压阻尼器，是一种较为环保的速度控制装置，且能应用在多种设备或产品上，能根据应用场景来定制：尺寸、型状、压力等；阻尼器在终端产品上，虽然只是配件，但存在的作用却是最至关重要，直接影响成品的功能体验。

弘丰智扬专注于液压阻尼器造研12年，初心从未改变。做好最核心的事，掌握最核心技术，小配件却要大学问，弘丰智扬会在技术积累中、不断实验探索中成长，或在该领域中技术突破，引领行业。

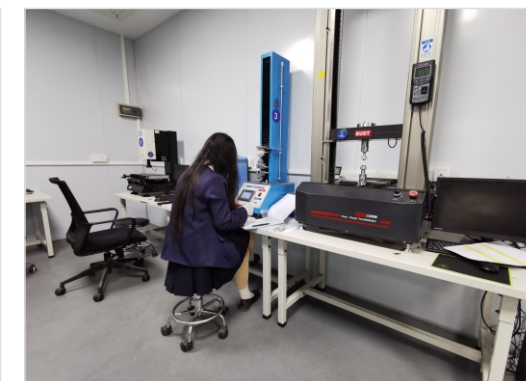
The hydraulic damper is a more environmentally friendly speed control device, and can be applied to a variety of equipment or products, and can be customized according to the application scenario: size, shape, pressure, etc.; the damper is on the end product, although it is only an accessory, but the role of existence is the most crucial, directly affecting the functional experience of the finished product.

Hongfeng Zhiyang has been focusing on the manufacture and research of hydraulic dampers for 12 years, and its original intention has never changed. Do the core thing well and master the core technology, but small accessories require great knowledge.



车间一角/生产设备 A corner of the workshop/production equipment

- 采用全自动/半自动先进生产设备，生产环境整齐有序。
- adopts fully automatic/semi-automatic advanced production equipment, and the production environment is neat and orderly



质检室一角 A corner of the quality inspection room

- 弘丰智扬把产品品质作为企业第一使命，公司设定多时段循环质检，保证每批产品都符合客户要求。
- Hongfeng Zhiyang regards product quality as the first mission of the enterprise. The company sets up multi-period cycle quality inspection to ensure that each batch of products meets customer requirements.



- 弘丰智扬经过十多年的市场考验，受国内外知名企业的信任与支持，达成长期稳定的合作。公司有成熟的售前售后支持服务，做到以客户为中心的服务指标，为客户提供解决文案；
- After more than ten years of market test, Hongfeng Zhiyang has been trusted and supported by well-known enterprises at home and abroad, and has reached long-term and stable cooperation. The company has mature pre-sales and after-sales support services, achieves customer-centric service indicators, and provides



- 弘丰智扬的发展离不开企业优秀的团队，公司倡导务实的作风，不搞花里胡哨表面作派，公司以公平公正的管理模式，让每一个员工体验到归属感，把工作作为自己的事业来做，部门之间合作无间，目标一致众志成城。
- The development of Hongfeng Zhiyang is inseparable from the excellent team of the company. The company advocates a pragmatic style of work and does not engage in bells and whistles. The company adopts a fair and just management model, Let every employee experience a sense of belonging, take work as their own

现期厂房 Current plant



- 弘丰智扬生产基地占地面积6500平方米，现在员工一百多名。产品在市场越受欢迎，远销海内外，产能升级越发急迫。
- Hongfeng Zhiyang production base covers an area of 6,500 square meters and now has more than 100 employees. The more popular the products are in the market and sold overseas, the more urgent it is to upgrade production capacity.

一期建设 Phase I construction



- 现生产基地由5500平方米大平层、占地1000平方米5层办公大楼组成，公司计划在2年内，取2000平方米用地建设6层工业综合大楼，配备自动一体化生产线，介时产能可以提高3倍。
- The current production base consists of a large flat floor of 5500 square meters and a 5-story office building covering an area of 1000 square meters. The company plans to take 2000 square meters of land to build a 6-story industrial complex within 2 years. Equipped with automatic integrated production lines, the intermediary production capacity can be increased 3 times.

三期建设 Phase III construction



- 计划6年内，完成三期建设，生产用地将达3万多平方米，另配部门办公区、独层研究区、展厅、会议室、招待室、休闲、餐饮区等配套。
- It is planned to complete the third phase of construction within 6 years, and the production land will reach more than 30,000 square meters. It will also be equipped with departmental office areas, single-story research areas, exhibition halls, meeting rooms, reception rooms, leisure, and dining areas.



智领阻尼核芯
Smart collar damping core



智领阻尼核芯
INTELLECTUAL
DAMPING CORE

CONTENTS



铰链阻尼系列
Hinged damper series

01-04



移门阻尼系列
Sliding door damping series

05-08



滑轨缓冲系列
Slide rail buffer series

09-09



多功能缓冲系列
Multi-function buffer series

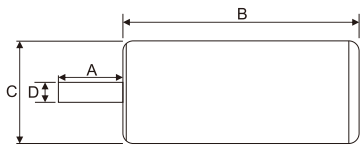
10-14





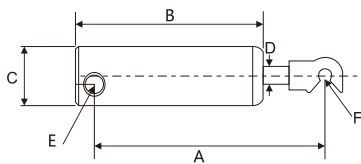
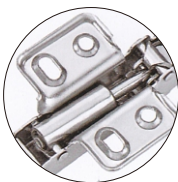
Model: HF-D01

材质: 铁
Material: Iron



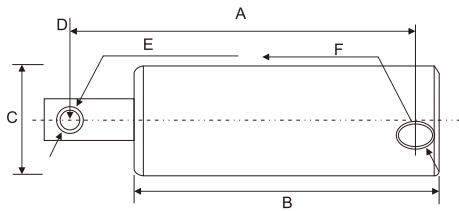
Model: HF-D02

材质: 铁
Material: Iron



Model: HF-LT03

材质: 纯铜
Material: Copper



产品技术参数

工作温度: -45°C~+50°C
工作速度: ≤0.5m/s

PRODUCT TECHNICAL PARAMETERS

Working temperature: - 45°C ~ + 50°C
Working speed: ≤0.5 m/s

产品特点

- 1、采用高端的密封技术，无漏油，渗油等现象。
- 2、能够均衡、全面、消声、平稳地提供更为舒适的减震，缓冲作用。
- 3、优质的材料制成，经久耐磨，使用寿命长达10万次以上。
- 4、能简单，便捷地安装和拆卸。

PRODUCT FEATURES

- 1 Hingh-end seal technoigy,without oil leakage and penetration
- 2 Evenly,completely,mutely and stably make more comfortable damping and buffer effect
- 3 Make of quality materials durable and wearable,more than 100,000 times of use
- 4 Simple and convenient installation and dismantling

主要技术参数 (单位: mm)

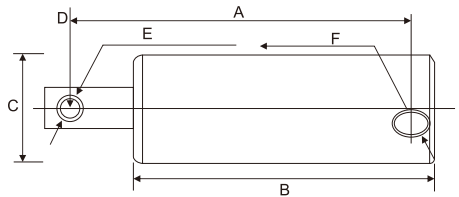
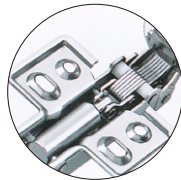
Main tachtical parameters

订购编码 Order code	产品名称 Product name	材质 Material	表面处理 Finish	A	B	C	D	E	F	适用范围 Scope of application
HF-D01	反弹式阻尼器 Rebound damper	铁 Iron	镀镍 Nickelage	5.0	17	Φ6.6	Φ2.0	/	/	适用于液压 缓冲铰链 For hydraulic buffering hinge
HF-D02	压入式阻尼器 Press-in damper	铁 Iron	镀镍 Nickelage	31.0	26	Φ8.9	Φ2.0	Φ3.0	Φ1.8	
HF-LT03	抽出式阻尼器 Draw-out damper	纯铜 Pure copper	锻打铜 Forged copper	27.3	26.5	Φ8.2	Φ4.0	Φ2.0	Φ2.5	



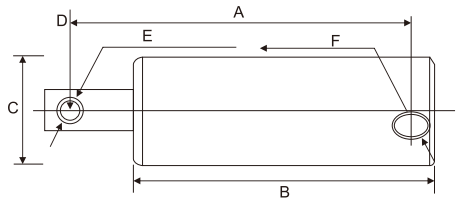
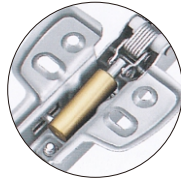
Model: HF-D04

材质: 铁
Material: Iron



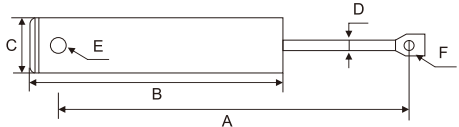
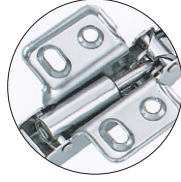
Model: HF-DT05

材质: 锻打铜
Material: Forging copper



Model: HF-D06

材质: 铁
Material: Iron



产品技术参数

工作温度: -45°C~+50°C
工作速度: ≤0.5m/s

PRODUCT TECHNICAL PARAMETERS

Working temperature: - 45°C ~ + 50°C
Working speed: ≤0.5 m/s

产品特点

- 1、采用高端的密封技术，无漏油，渗油等现象。
- 2、能够均衡、全面、消声、平稳地提供更为舒适的减震，缓冲作用。
- 3、优质的材料制成，经久耐磨，使用寿命长达10万次以上。
- 4、能简单，便捷地安装和拆卸。

PRODUCT FEATURES

- 1 Hingh-end seal technoigy,without oil leakage and penetration
- 2 Evenly,completely,mutely and stably make more comfortable damping and buffer effect
- 3 Make of quality materials durable and wearable,more than 100,000 times of use
- 4 Simple and convenient installation and dismantling

主要技术参数 (单位: mm)

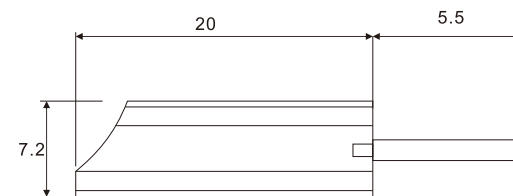
Main technical parameters

订购编码 Order code	产品名称 Product name	材质 Material	表面处理 Finish	A	B	C	D	E	F	适用范围 Scope of application
HF-D04	抽出式阻尼器 Draw-out damper	铁 Iron	镀镍 Nickelage	32.2	26.7	Φ8.2和Φ8.9	Φ4.0	Φ2.0	Φ3.0	适用于液压 缓冲铰链 For hydraulic buffering hinge
HF-DT05		铜 Copper	段打铜 Duan copper	29.5	25.7	Φ8.2	Φ4.0	Φ2.0	Φ3.0	
HF-D06		铁 Iron	镀镍 Nickelage	33	22	Φ8.2	Φ2.4	Φ2.0	Φ1.8	



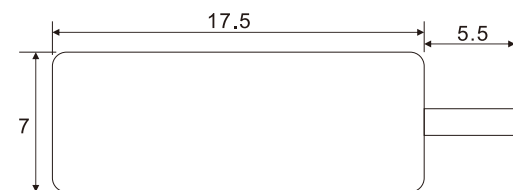
Model: HF-S03

材质: POM
Material: POM



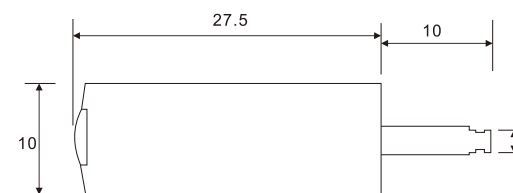
Model: HF-S04

材质: POM
Material: POM



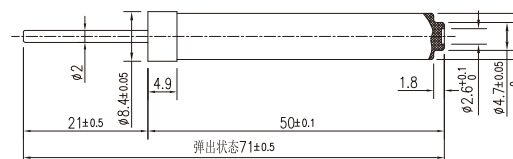
Model: HF-S05

材质: POM
Material: POM



Model: HF-7.8-71

材质: POM
Material: POM



产品技术参数

工作温度: -45°C~+50°C
工作速度: ≤0.5m/s

PRODUCT TECHNICAL PARAMETERS

Working temperature: -45°C ~ +50°C
Working speed: ≤0.5 m/s

产品特点

- 1、采用高端的密封技术，无漏油，渗油等现象。
- 2、能够均衡、全面、消声、平稳地提供更为舒适的减震，缓冲作用。
- 3、优质的材料制成，经久耐磨，使用寿命长达10万次以上。
- 4、能简单，便捷地安装和拆卸。

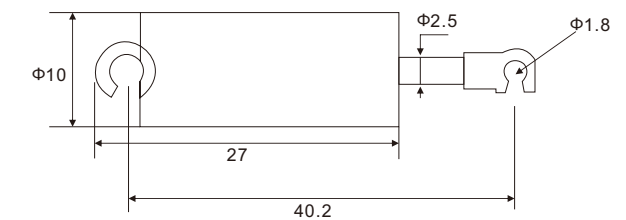
PRODUCT FEATURES

- 1 Hingh-end seal technoiogy,without oil leakage and penetration
- 2 Evenly,completely,mutely and stably make more comfortable damping and buffer effect
- 3 Make of quality materials durable and wearable,more than 100,000 times of use
- 4 Simple and convenient installation and dismantling



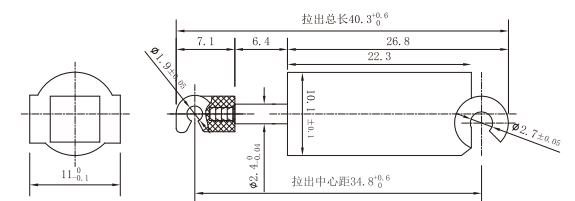
Model: HF-S06

材质: POM
Material: POM



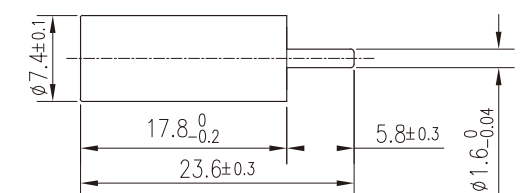
Model: HF-10-40

材质: POM
Material: POM



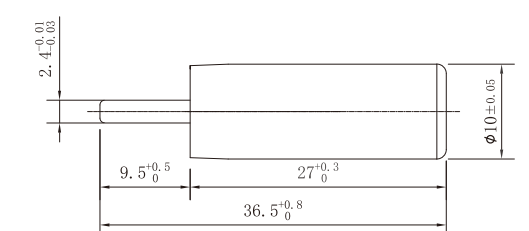
Model: HF-7.4-23.6

材质: POM
Material: POM



Model: HF-10-36.5

材质: POM
Material: POM



产品技术参数

工作温度: -45°C~+50°C
工作速度: ≤0.5m/s

PRODUCT TECHNICAL PARAMETERS

Working temperature: -45°C ~ +50°C
Working speed: ≤0.5 m/s

产品特点

- 1、采用高端的密封技术，无漏油，渗油等现象。
- 2、能够均衡、全面、消声、平稳地提供更为舒适的减震，缓冲作用。
- 3、优质的材料制成，经久耐磨，使用寿命长达10万次以上。
- 4、能简单，便捷地安装和拆卸。

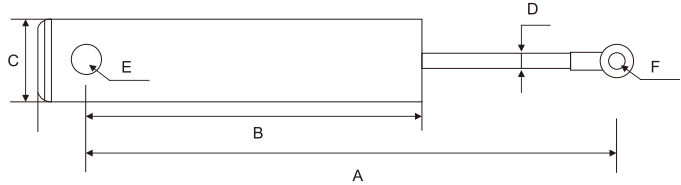
PRODUCT FEATURES

- 1 Hingh-end seal technoiogy,without oil leakage and penetration
- 2 Evenly,completely,mutely and stably make more comfortable damping and buffer effect
- 3 Make of quality materials durable and wearable,more than 100,000 times of use
- 4 Simple and convenient installation and dismantling



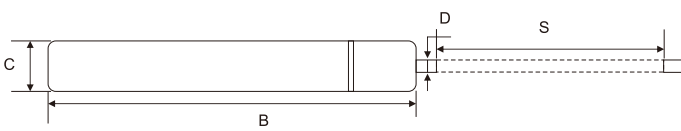
Model: HF-10-97W

材质: 铁
Material: Iron



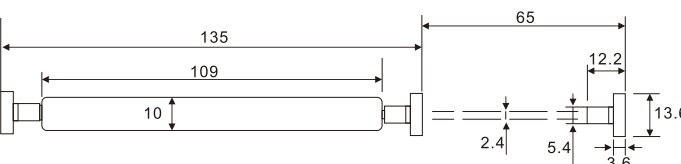
Model: HF-78-49F

材质: 铁
Material: Iron



Model: HF-10-109 ST

材质: 铁
Material: Iron



产品技术参数

工作温度: -45°C~+50°C
工作速度: ≤0.5m/s

产品特点

- 1、采用高端的密封技术, 无漏油, 渗油等现象。
- 2、能够均衡、全面、消声、平稳地提供更为舒适的减震, 缓冲作用。
- 3、优质的材料制成, 经久耐磨, 使用寿命长达10万次以上。
- 4、能简单, 便捷地安装和拆卸。

主要技术参数 (单位: mm)

Main technical parameters

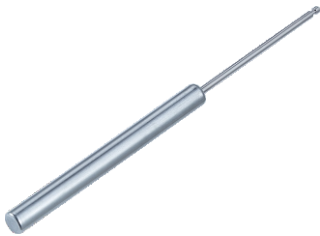
订购编码 Order code	产品名称 Product name	尺寸 Size	材质 Material	表面处理 Finish	缸长B (mm) Long cylinder	缸径 (mm) Bore	杆径D (mm) Rod diameter	孔径E Aperture	孔径F Aperture	最大行程 Maximum stroke	适用范围 Scope of application
HF-10-97W	阻尼器 Damper	Φ10x97	铁 Iron	可喷色 或电镀 Sprayed color or electroplating	97	Φ10	Φ2.4或3.0	Φ5.0	Φ5.0	54	餐台, 拉伸台等轨道 Table, stretch table and other slide rails
HF-78-49F	反弹阻尼器 Rebound damper	Φ7.8x49			49	Φ7.8	Φ2.0	/	/	40	门碰、吊轮或 衣柜等产品 Door bumps, hanging wheels or wardrobes, etc.
HF-10-109ST	阻尼器 Damper	Φ10x109			109	Φ10	Φ2.4	/	/	65	

PRODUCT TECHNICAL PARAMETERS

Working temperature: - 45°C ~ + 50°C
Working speed: ≤0.5 m/s

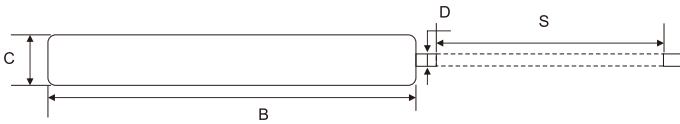
PRODUCT FEATURES

- 1 Hingh-end seal technoigy,without oil leakage and penetration
- 2 Evenly,completely,mutely and stably make more comfortable damping and buffer effect
- 3 Make of quality materials durable and wearable,more than 100,000 times of use
- 4 Simple and convenient installation and dismantling



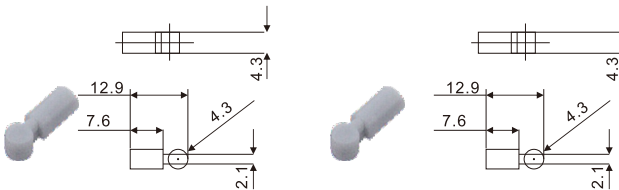
Model: HF-66

材质: 铁、纯铜
Material: Iron, Copper



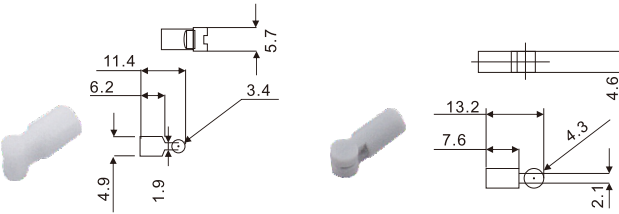
Model: HF-78

材质: 铁、纯铜
Material: Iron, Copper



Model: HF-10

材质: 铁
Material: Iron



产品技术参数

工作温度: -45°C~+50°C
工作速度: ≤0.5m/s

产品特点

- 1、采用高端的密封技术, 无漏油, 渗油等现象。
- 2、能够均衡、全面、消声、平稳地提供更为舒适的减震, 缓冲作用。
- 3、优质的材料制成, 经久耐磨, 使用寿命长达10万次以上。
- 4、能简单, 便捷地安装和拆卸。

主要技术参数 (单位: mm)

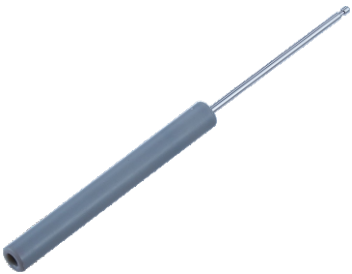
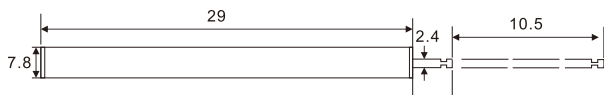
Main technical parameters

订购编码 Order code	产品名称 Product name	阻尼器常规尺寸 Conventional Size of dampers	材质 Material	表面处理 Finish	缸长B (mm) Long cylinder	缸径 (mm) Bore	杆径D (mm) Rod diameter	最大行程 Maximum stroke	适用范围 Scope of application
HF-66-70	阻尼器 Damper	Φ6.6x70	电解板 Electrolytic plate	可喷色 或电镀 Sprayed color or electroplating	70	Φ6.6	Φ2.0	40	滚珠滑轨缓冲塑料支架 或隐藏轨缓冲支架 Can beusedDall sikde rall custioning plastic support
HF-66-82		Φ6.6x82			82	Φ6.6	Φ2.0	54	
HF-78-70		Φ7.8x70			70	Φ7.8	Φ2.0	43	
HF-78-82		Φ7.8x82			82		Φ2.0	54	可用于 滚珠滑轨缓冲 塑料支架或隐藏 轨缓冲支架 Can beusedDall sikde rall custioning plastic support Or hidden rallbulfer suppoft
HF-78-83		Φ7.8x83			83		Φ2.0	55	
HF-78-87		Φ7.8x87			87		Φ2.0	58	
HF-78-97		Φ7.8x97			97		Φ2.0	70	
HF-78-117		Φ7.8x117			117		Φ2.0或Φ2.4	87	
HF-10-82		Φ10x82			82	Φ10	Φ2.0或Φ3.0	54	可用于移门, 推拉门, 中空门, 趟门, 衣柜门 等缓冲器支架 Can beused for uiding door, silding door, holions door, coset door framebuter
HF-10-97		Φ10x97			97		Φ2.0或Φ3.0	70	
HF-10-108.9		Φ10x108.9			108.9		Φ2.0或Φ3.0	80	
HF-10-125		Φ10x125			125		Φ2.0或Φ3.0	97	
HF-10-130		Φ10x130			130		Φ2.0或Φ3.0	103	



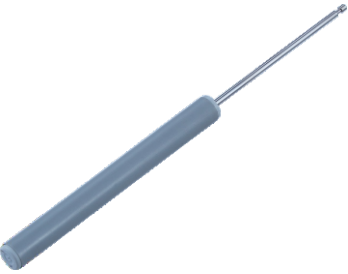
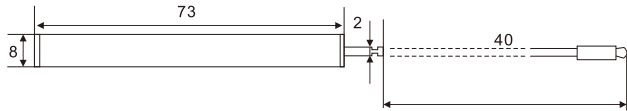
Model: HF-78-29

材质: 铁、
Material: Iron



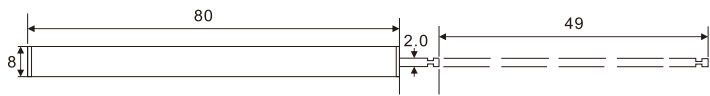
Model: HF-S07

材质: POM
Material: POM



Model: HF-S08

材质: POM
Material: POM



产品技术参数

工作温度: -45°C~+50°C
工作速度: ≤0.5m/s

PRODUCT TECHNICAL PARAMETERS

Working temperature: - 45°C ~ + 50°C
Working speed: ≤0.5 m/s

产品特点

- 1、采用高端的密封技术，无漏油，渗油等现象。
- 2、能够均衡、全面、消声、平稳地提供更为舒适的减震，缓冲作用。
- 3、优质的材料制成，经久耐磨，使用寿命长达10万次以上。
- 4、能简单，便捷地安装和拆卸。

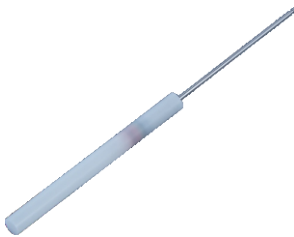
PRODUCT FEATURES

- 1 Hingh-end seal technoigy,without oil leakage and penetration
- 2 Evenly,completely,mutely and stably make more comfortable damping and buffer effect
- 3 Make of quality materials durable and wearable,more than 100,000 times of use
- 4 Simple and convenient installation and dismantling

主要技术参数 (单位: mm)

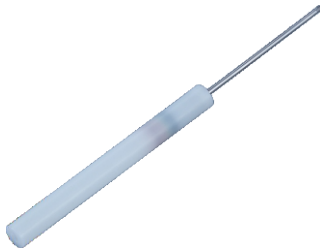
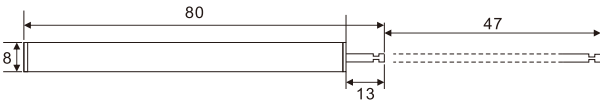
Main technical parameters

订购编码 Order code	产品名称 Product name	尺寸 Size	材质 Material	表面处理 Finish	缸长B (mm) Long cylinder	缸径 (mm) Bore	杆径D (mm) Rod diameter	最大行程 Maximum stroke	适用范围 Scope of application
HF-78-29	阻尼器 Damper	Φ7.8x29	铁 Iron	/	29	Φ7.8	Φ2.4	10.5	门碰、天地铰链 Door touch, heaven and earth hinge
HF-S07	塑料阻尼器 Plastic damper	Φ8x73	塑料 Plastic		73	Φ8	Φ2.0	40	隐藏式支架 Hidden bracket
HF-S08		Φ8x80二段力			80	Φ8	Φ2.0	49	



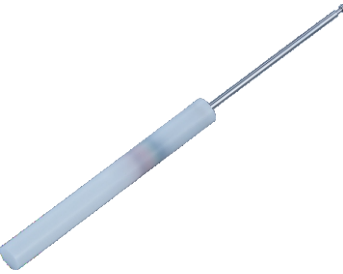
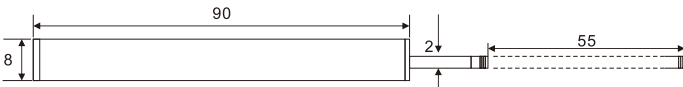
Model: HF-S09

材质: POM
Material: POM



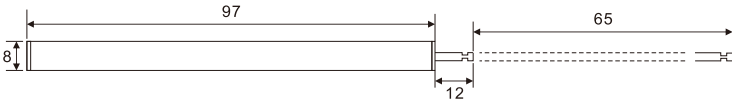
Model: HF-S10

材质: POM
Material: POM



Model: HF-S11

材质: POM
Material: POM



产品技术参数

工作温度: -45°C~+50°C
工作速度: ≤0.5m/s

PRODUCT TECHNICAL PARAMETERS

Working temperature: - 45°C ~ + 50°C
Working speed: ≤0.5 m/s

产品特点

- 1、采用高端的密封技术，无漏油，渗油等现象。
- 2、能够均衡、全面、消声、平稳地提供更为舒适的减震，缓冲作用。
- 3、优质的材料制成，经久耐磨，使用寿命长达10万次以上。
- 4、能简单，便捷地安装和拆卸。

PRODUCT FEATURES

- 1 Hingh-end seal technoigy,without oil leakage and penetration
- 2 Evenly,completely,mutely and stably make more comfortable damping and buffer effect
- 3 Make of quality materials durable and wearable,more than 100,000 times of use
- 4 Simple and convenient installation and dismantling

主要技术参数 (单位: mm)

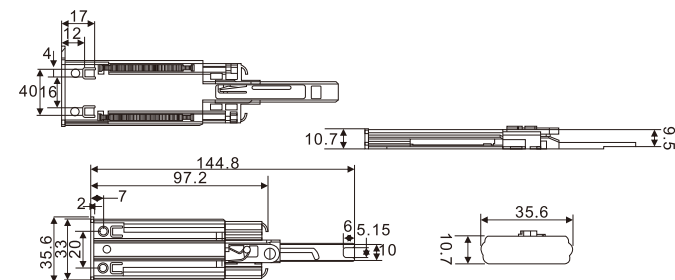
Main technical parameters

订购编码 Order code	产品名称 Product name	尺寸 Size	材质 Material	表面处理 Finish	缸长B (mm) Long cylinder	缸径 (mm) Bore	杆径D (mm) Rod diameter	最大行程 Maximum stroke	适用范围 Scope of application
HF-S09	塑料阻尼器 Plastic damper	Φ8x80	塑料 Plastic	/	80	Φ8	Φ2.0	47	隐藏式支架 Hidden bracket
HF-S10		Φ8x90			90	Φ8	Φ2.0	55	
HF-S11		Φ8x97			97	Φ8	Φ2.0	65	



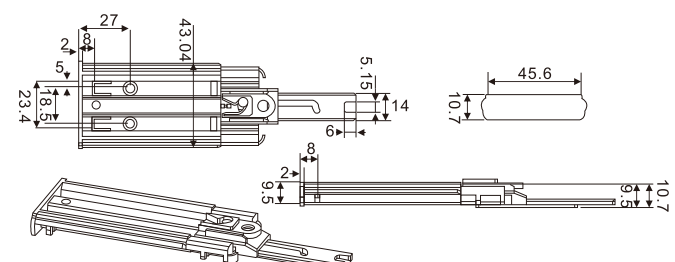
Model: HF-S35

材质: POM
Material: POM



Model: HF-S46

材质: POM
Material: POM



产品技术参数

工作温度: -45°C~+50°C
工作速度: ≤0.5m/s

产品特点

- 1、采用高端的密封技术，无漏油，渗油等现象。
- 2、能够均衡、全面、消声、平稳地提供更为舒适的减震，缓冲作用。
- 3、优质的材料制成，经久耐磨，使用寿命长达10万次以上。
- 4、能简单，便捷地安装和拆卸。

PRODUCT TECHNICAL PARAMETERS

Working temperature: -45°C ~ +50°C
Working speed: ≤0.5 m/s

PRODUCT FEATURES

- 1 Hingh-end seal technioigy,without oil leakage and penetration
- 2 Evenly,completely,mutely and stably make more comfortable damping and buffer effect
- 3 Make of quality materials durable and wearable,more than 100,000 times of use
- 4 Simple and convenient installation and dismantling

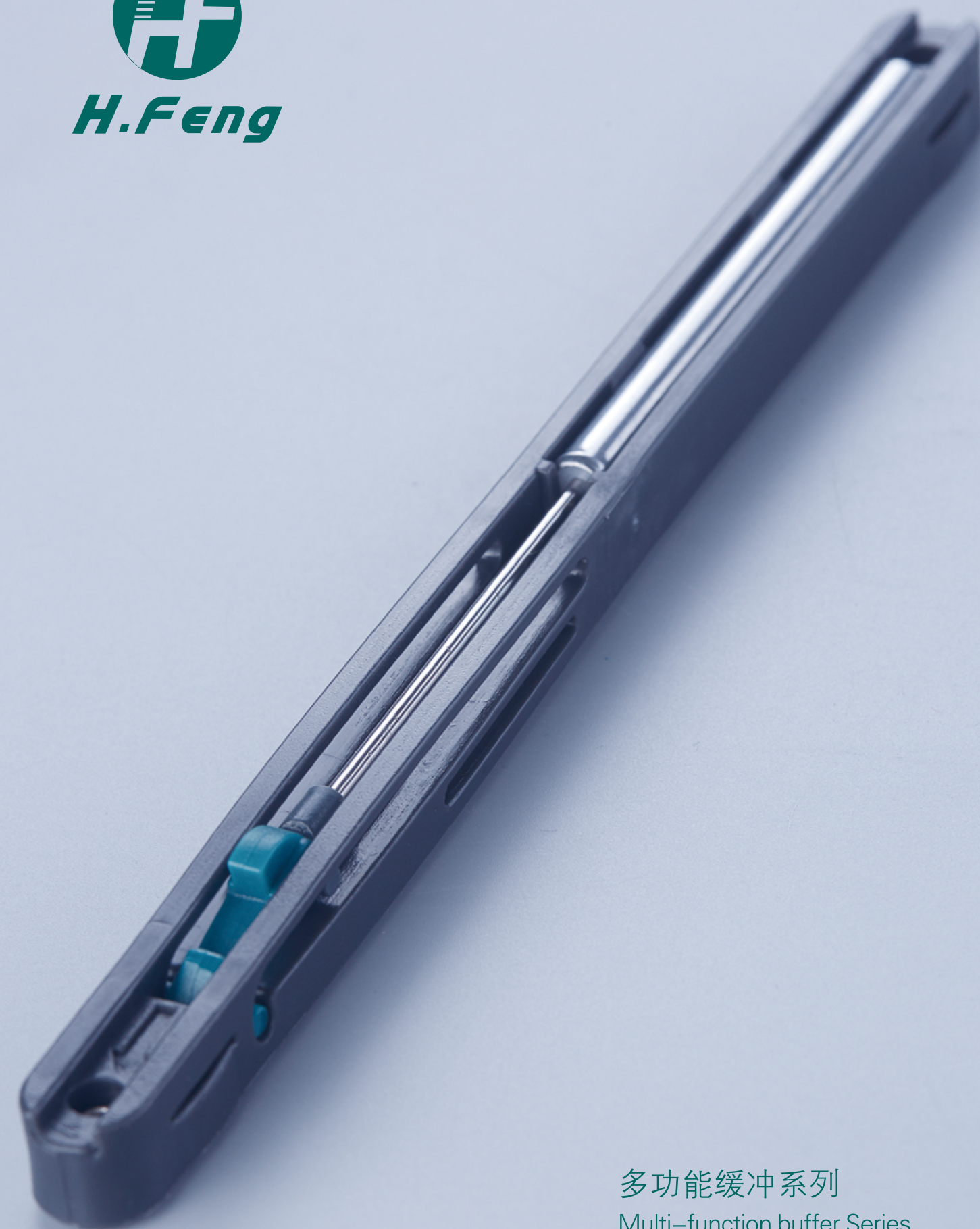
主要技术参数 (单位: mm)

缓冲缸尺寸 Buffer cylinder size	材质 Material	表面处理 Finish	缸长B (mm) Long cylinder	缸径 (mm) Bore	杆径 (mm) Rod diameter	S
Φ6.6x70	铁	/	70	Φ6.6	Φ2.0	40

主要技术参数 (单位: mm)

Main technical parameters

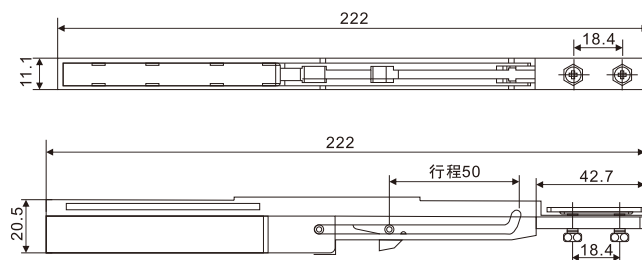
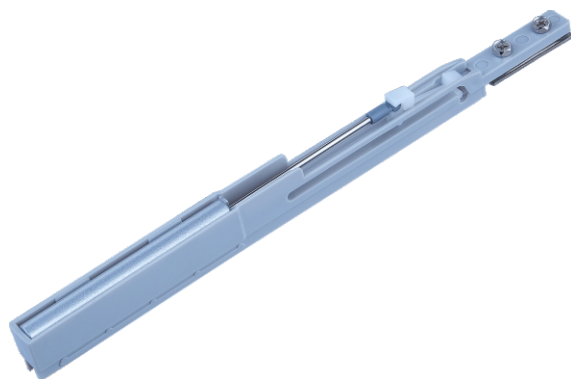
订购编码 Order code	产品名称 Product name	材质 Material	支架颜色 Bracket color	H	I	J	K	L	M	N	适用范围 Scope of application
HF-S35	单弹簧缓冲器 Single spring buffer	塑料, 聚甲醛 Plastic, Polyoxymethylene	灰色 Gray	144.8	33	10.7	9.5	35.6	2	/	三节滚珠 缓冲轨道 Three-section roll-ball buffering sliding rail
HF-S46				144.8	43.04	10.2	9.5	45.2	2	/	



多功能缓冲系列
Multi-function buffer Series

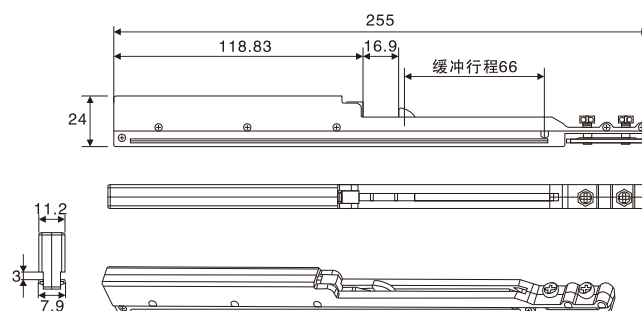
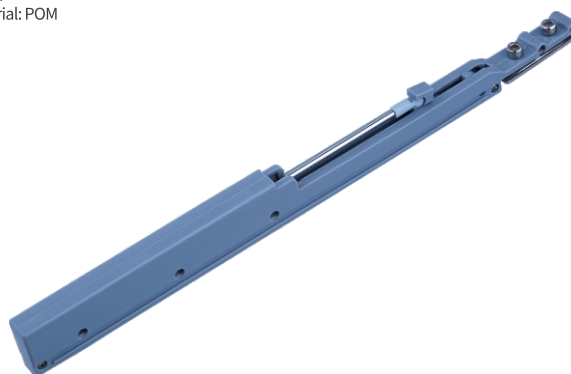
Model: HF-006A

材质: POM
Material: POM



Model: HF-006C

材质: POM
Material: POM



产品技术参数

工作温度: -45°C~+50°C
行程: 50mm
运行时间: 2-5S
工作速度: ≤0.5m/s
最大承重: 50kgs
使用寿命: 50000次以上

Product Specifications

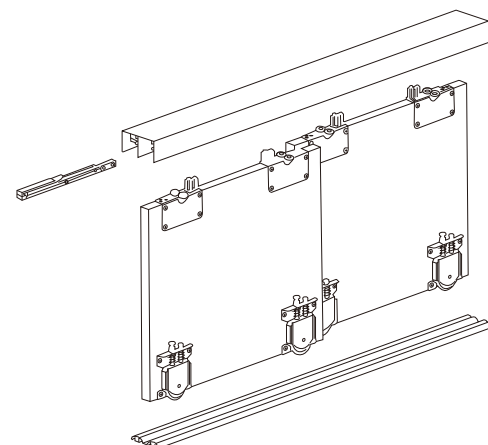
Working temperature: -45°C ~ +50°C
Stroke: 50 mm
Run time: 3-4 s
Working speed: 0.5 m/s or less
The maximum bearing: 50 KGS
Service life: More + 50000 times

产品适用范围

适用于室内移门, 大型抽屉等
使门关闭的效果达到轻盈, 宁静。

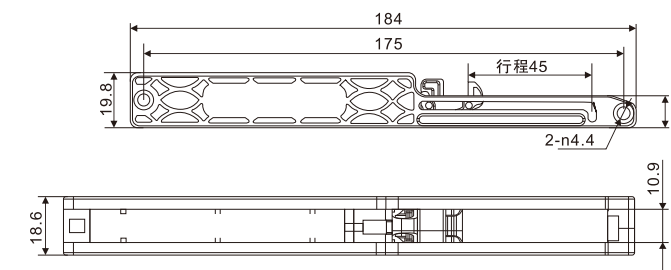
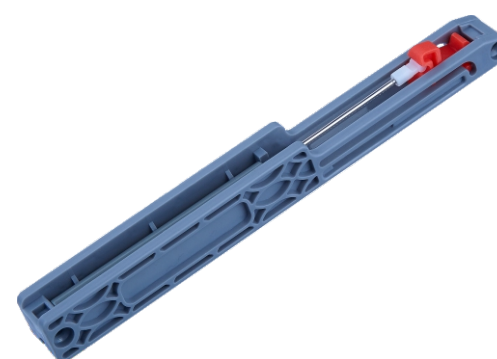
Product scope

Suitable for indoor door, large drawer, etc
To close the door to the effect of light and peace.



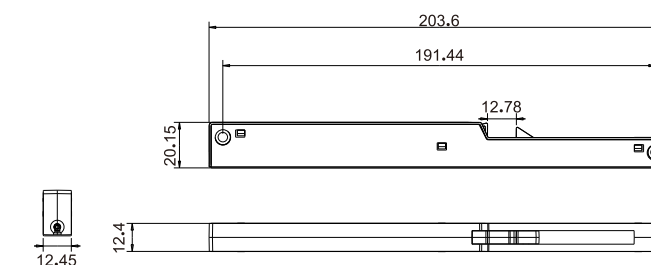
Model: HF-007A

材质: POM
Material: POM



Model: HF-007B

材质: POM+不锈钢外壳
Material: POM+ Stainless steel housing



产品技术参数

工作温度: -45°C~+50°C
行程: 50mm
运行时间: 2-5S
工作速度: ≤0.5m/s
最大承重: 50kgs
使用寿命: 50000次以上

Product Specifications

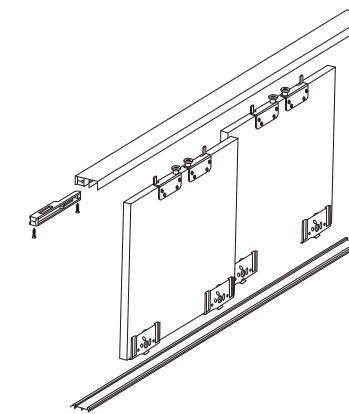
Working temperature: -45°C ~ +50°C
Stroke: 50 mm
Run time: 2-5 s
Working speed: 0.5 m/s or less
The maximum bearing: 50 KGS
Service life: More + 50000 times

产品适用范围

适用于室内移门, 大型抽屉等
使门关闭的效果达到轻盈, 宁静。

Product scope

Suitable for indoor door, large drawer, etc
To close the door to the effect of light and peace.



Model: HF-011

材质: POM
Material: POM



产品技术参数

工作温度: -45°C~+50°C
行程: 50mm
运行时间: 2-5S
工作速度: ≤0.5m/s
最大承重: 50kgs
使用寿命: 50000次以上

Product Specifications

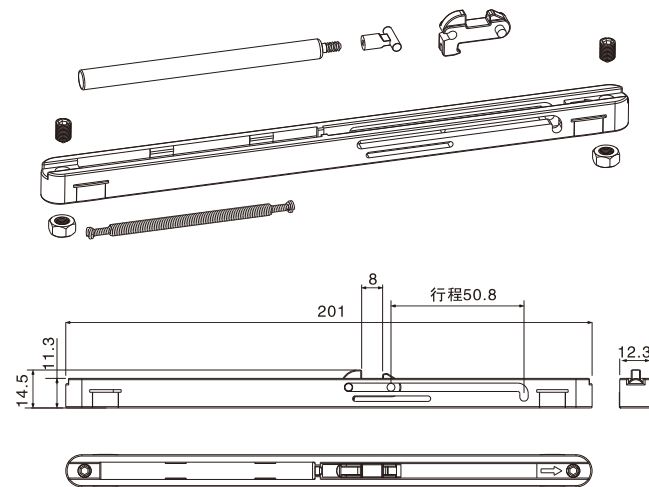
Working temperature: -45°C~+50°C
Stroke: 50 mm
Run time: 2-5 s
Working speed: 0.5 m/s or less
The maximum bearing: 50 KGS
Service life: More + 50000 times

产品适用范围

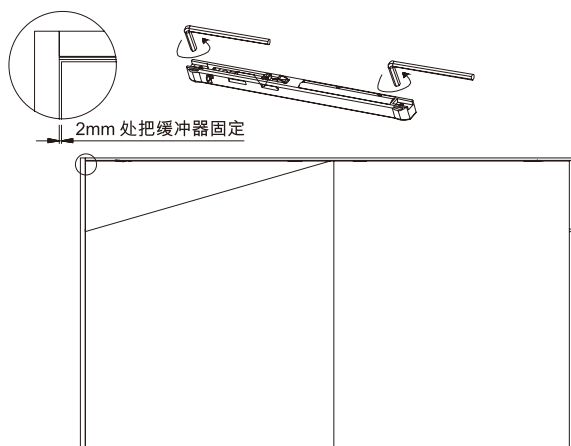
适用于室内移门, 大型抽屉等
使门关闭的效果达到轻盈, 宁静。

Product scope

Suitable for indoor door, large drawer, etc
To close the door to the effect of light and peace.

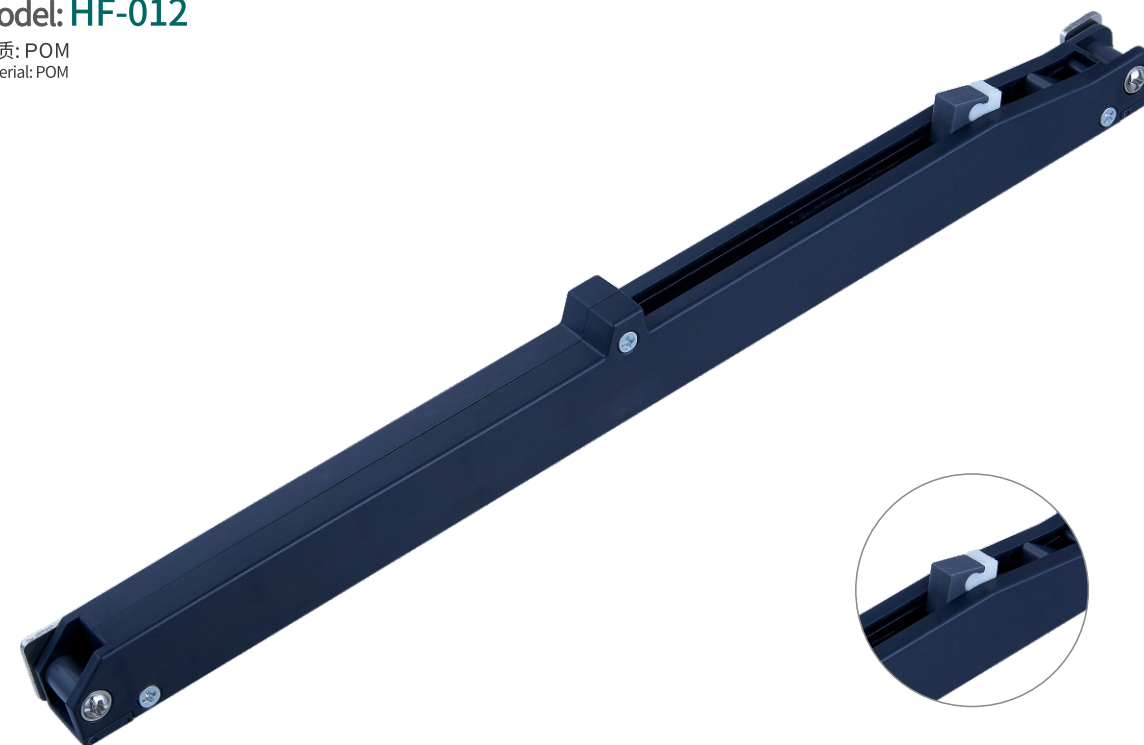


序号	名称	描述	用量
1	HF-011缓冲支架	POM	1
2	HF-011扣件	POM	1
3	HF-011连接头	POM	1
4	φ0.6x3.9x70拉簧	力值15N 力值30N	1
5	M5*8内六角尖头紧定螺丝	Q235 (发黑)	2
6	M5*0.8x4螺母	Q235 (白锌)	2
7	φ6.6x82.2长缸	速度3S-4S 力直23N	1



Model: HF-012

材质: POM
Material: POM



产品技术参数

工作温度: -45°C~+50°C
行程: 50mm
运行时间: 2-5S
工作速度: ≤0.5m/s
最大承重: 50kgs
使用寿命: 50000次以上

Product Specifications

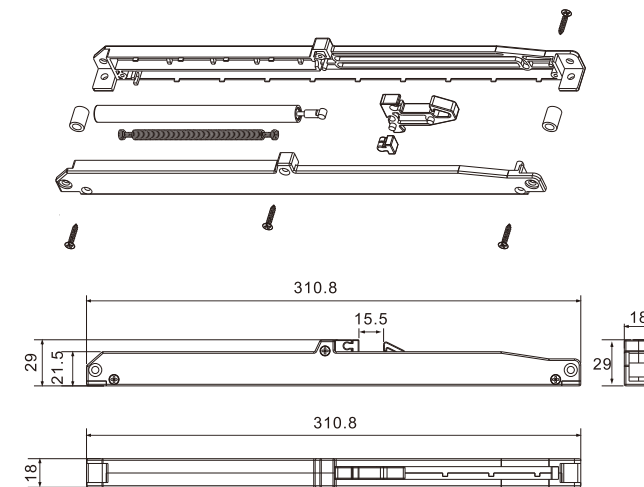
Working temperature: -45°C~+50°C
Stroke: 50 mm
Run time: 2-5 s
Working speed: 0.5 m/s or less
The maximum bearing: 50 KGS
Service life: More + 50000 times

产品适用范围

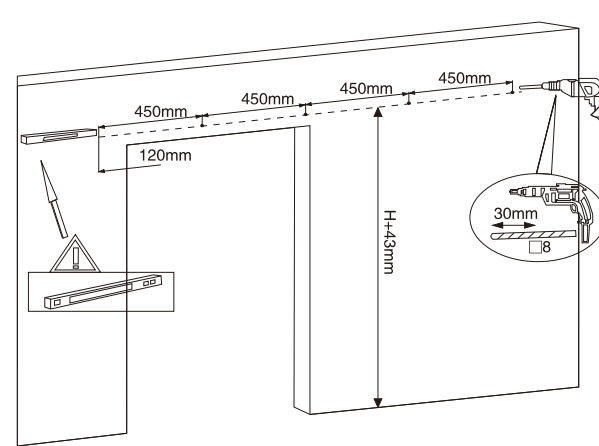
适用于室内移门, 大型抽屉等
使门关闭的效果达到轻盈, 宁静。

Product scope

Suitable for indoor door, large drawer, etc
To close the door to the effect of light and peace.

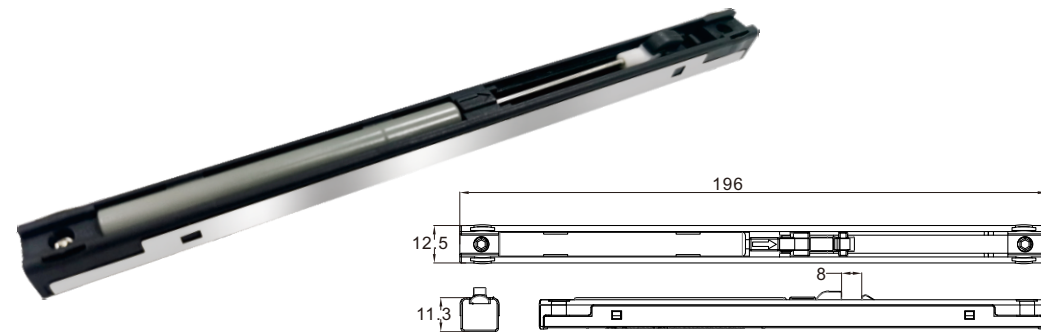


序号	名称	描述	用量
1	φ0.75x6x100拉簧	力值16N,力值36N	
2	HF-012支架1	ABS	
3	HF-012支架2	ABS (黑色)	
4	HF-012扣件	POM	
5	HF-012防撞胶	PVC	
6	M4方形螺母 (12.5x18)	SPCC T=2.0(镀镍)	
7	HF-012圆柱套	ABS	
8	M4x22十字带介盘头螺丝	1018 (镀镍)	
9	φ10x129长缸	用环利款改用通连接头	
10	St3x16十字沉头自攻螺丝	1018A(镀镍)	



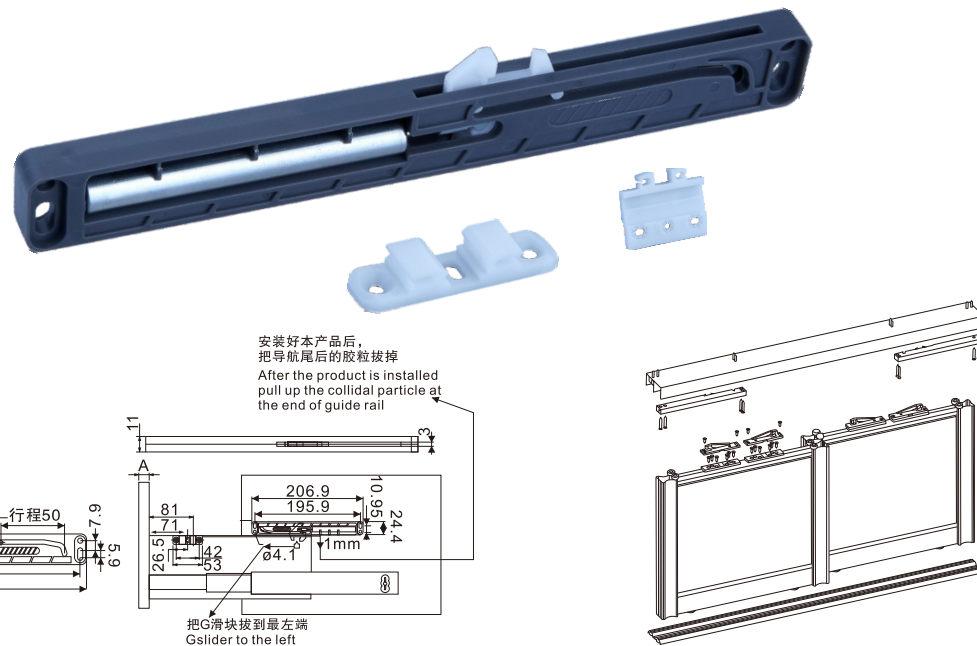
Model: HF-10B

材质: POM+金属
Material: POM+metal



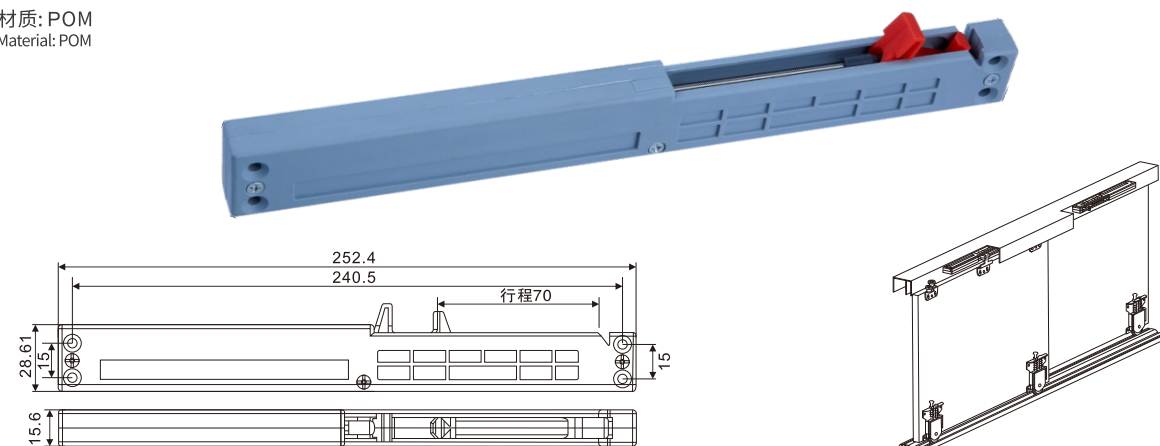
Model: HF-004

材质: POM
Material: POM



Model: HF-008

材质: POM
Material: POM



产品技术参数

工作温度: $-45^{\circ}\text{C} \sim +50^{\circ}\text{C}$
行程: 50mm
运行时间: 2-5S
工作速度: $\leq 0.5\text{m/s}$
最大承重: 50kgs
使用寿命: 50000次以上

Product Specifications

Working temperature: $-45^{\circ}\text{C} \sim +50^{\circ}\text{C}$
Stroke: 50 mm
Run time: 3-4 s
Working speed: 0.5 m/s or less
The maximum bearing: 50 KGS
Service life: More + 50000 times

产品适用范围

适用于室内移门, 大型抽屉等
使门关闭的效果达到轻盈, 宁静。

Product scope

Suitable for indoor door, large drawer, etc
To close the door to the effect of light and peace.

阻尼标杆

Quality guarantee

矢志创新

Continuous innovation